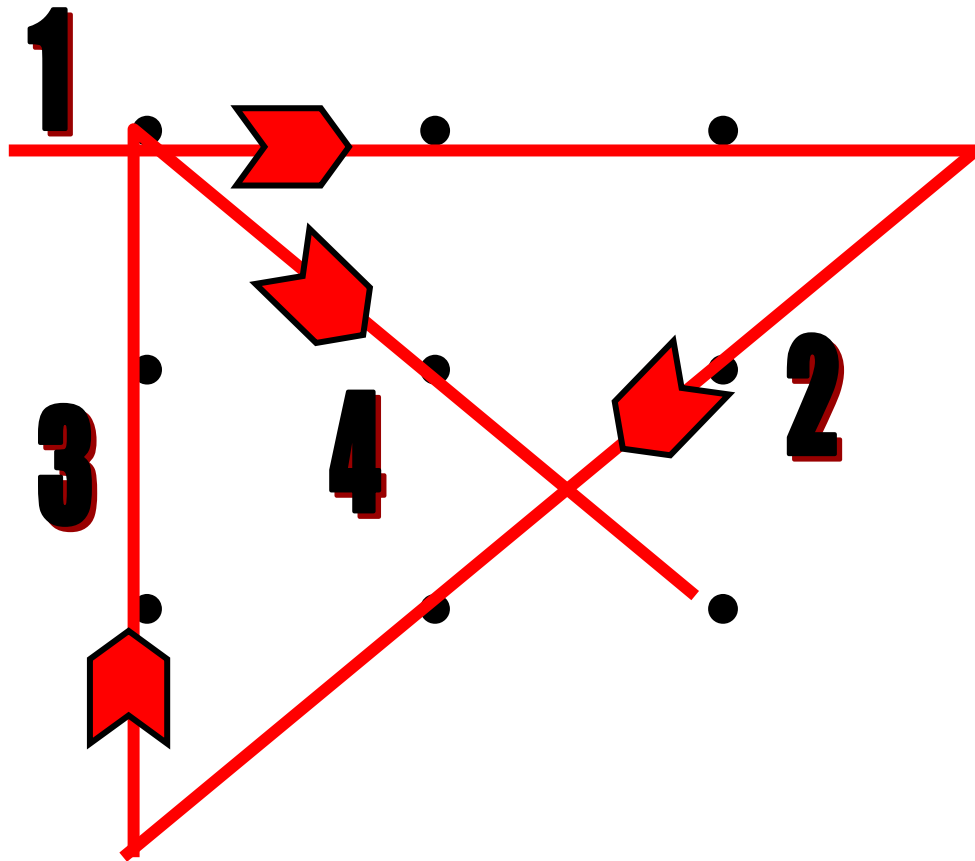


THINKING OUTSIDE THE BOX

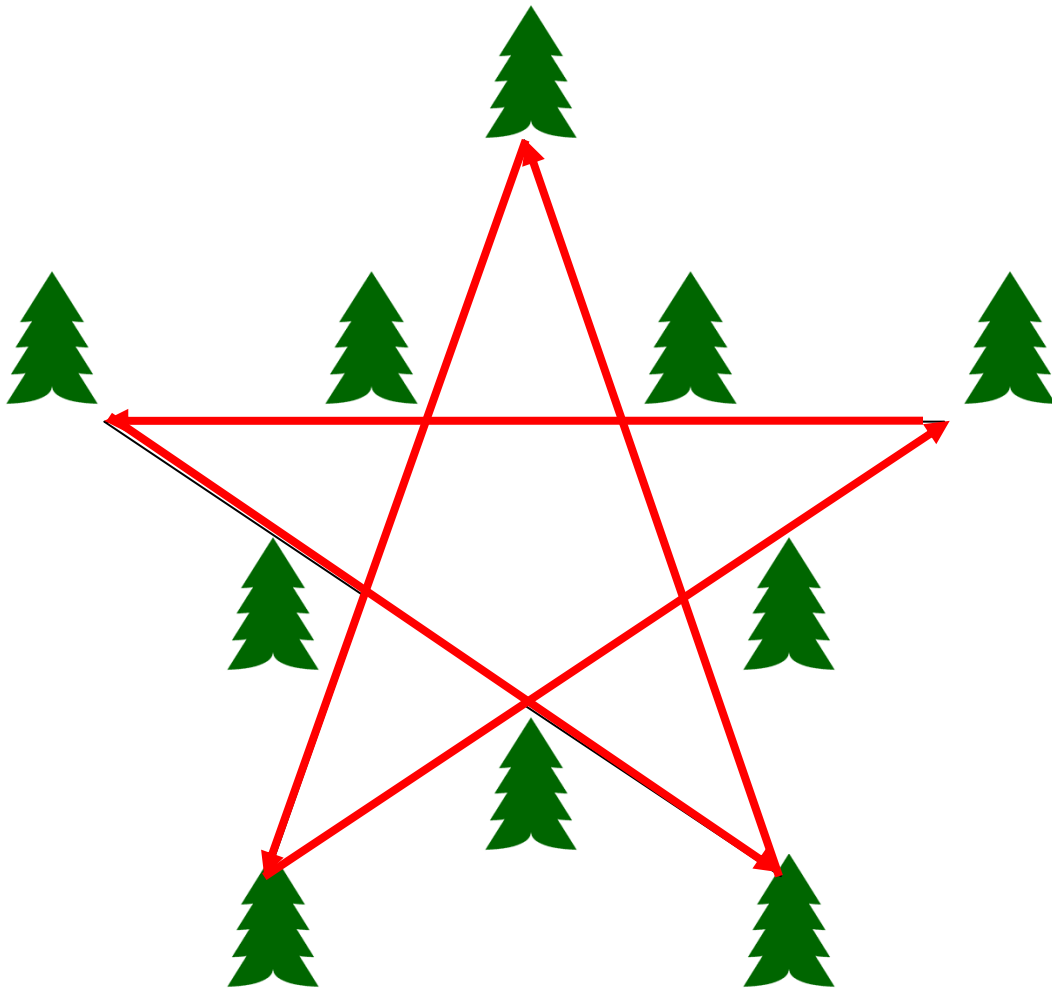


Using four (4) straight lines, and without lifting
pen/pencil from paper, connect ALL the dots

De-Limit – Inside the Box Thinking

There is a total of 30 squares inside the box

**De-Limit - Planting Trees:
10 Trees; 5 Rows; 4 Trees / Row**



Light-Bulb Conundrum

- You are in a room with three (3) light switches.
- Each switch goes to one (1) light bulb in the next room.
 - [Switches are all 100% on-off, NOT 'sliding']
- You can turn on each switch only one time.
- You can enter the other room only one time.
- How can you identify which switch goes to which bulb?

Answer:

- Designate switches # 1, 2, 3
- Turn on #1 switch
 - Leave it on for 10 minutes
- Turn off #1
- Turn on #2
- Go into room
 - Bulb that is on is switch #2
 - Bulb that feels hot is switch #1
- Bulb that is off & cold is switch #3